



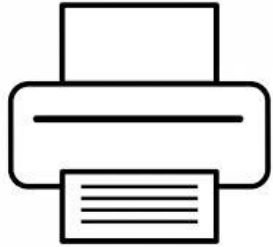
Network Printer System Analysis

소프트웨어 공학 개론 B - T1

도승현 정현인 임호형
송가영 Tanguy

Network Printer System

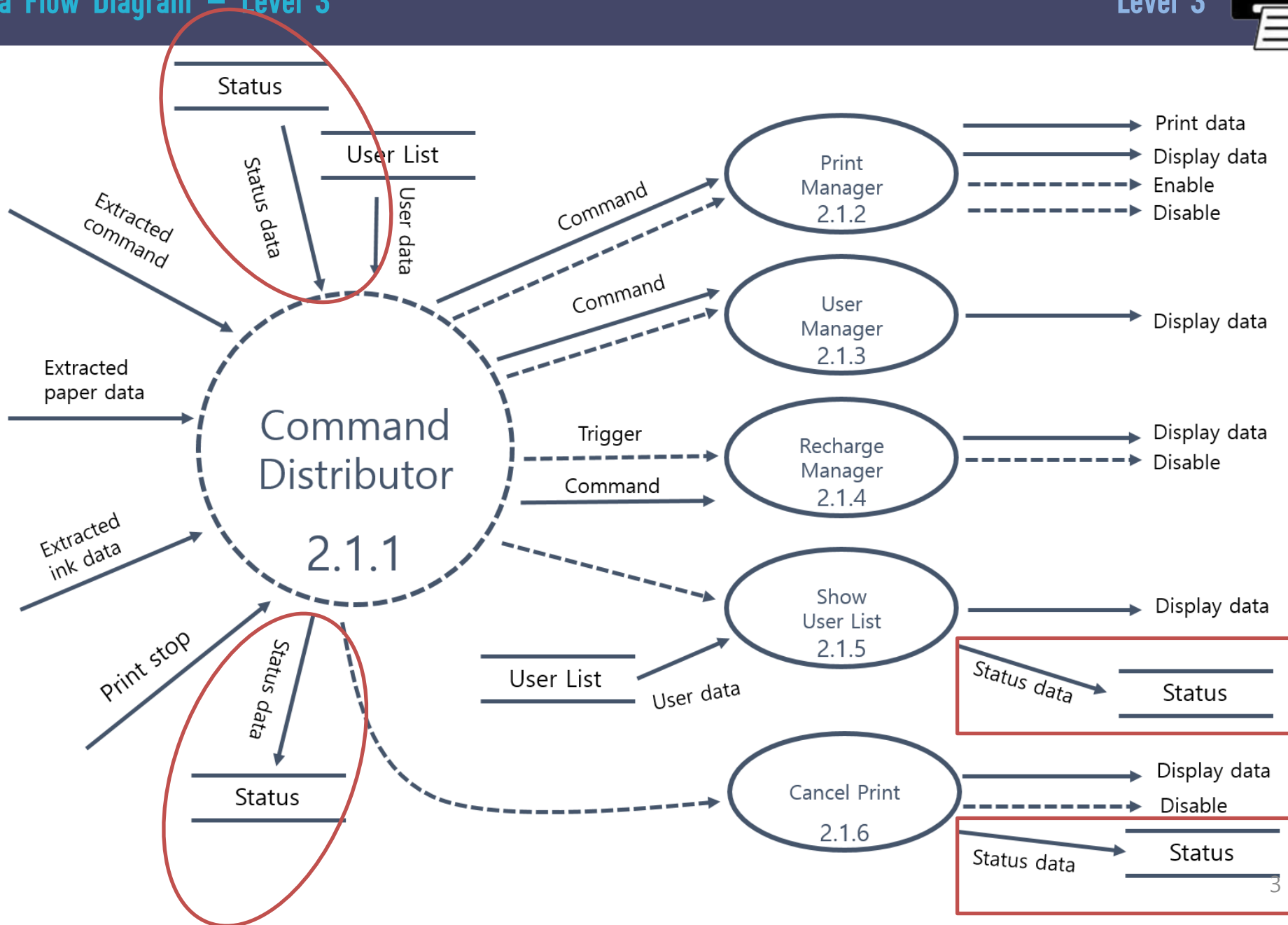
소프트웨어 공학 개론
Class B Team 1



Network Printer System Analysis

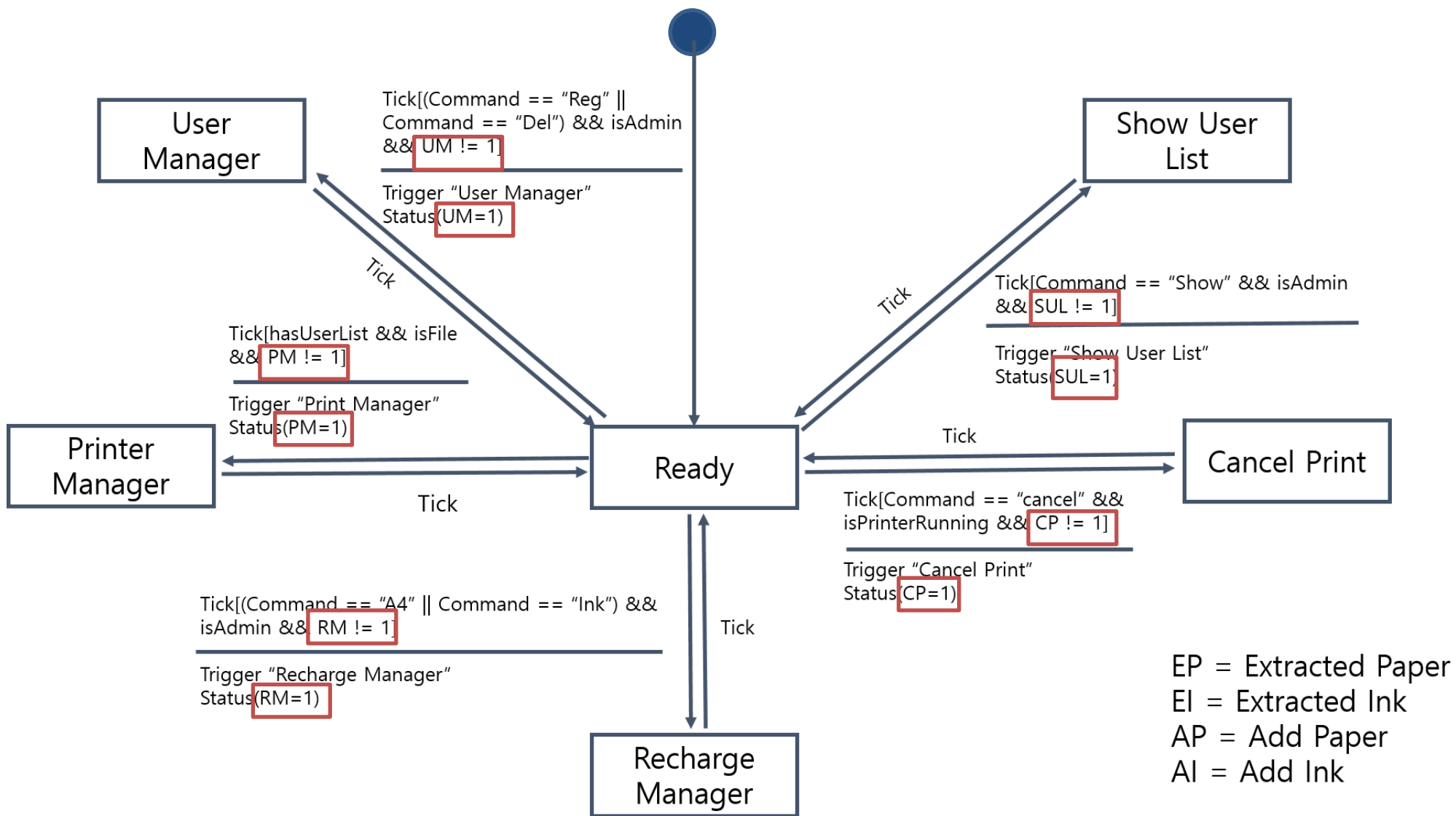
INDEX

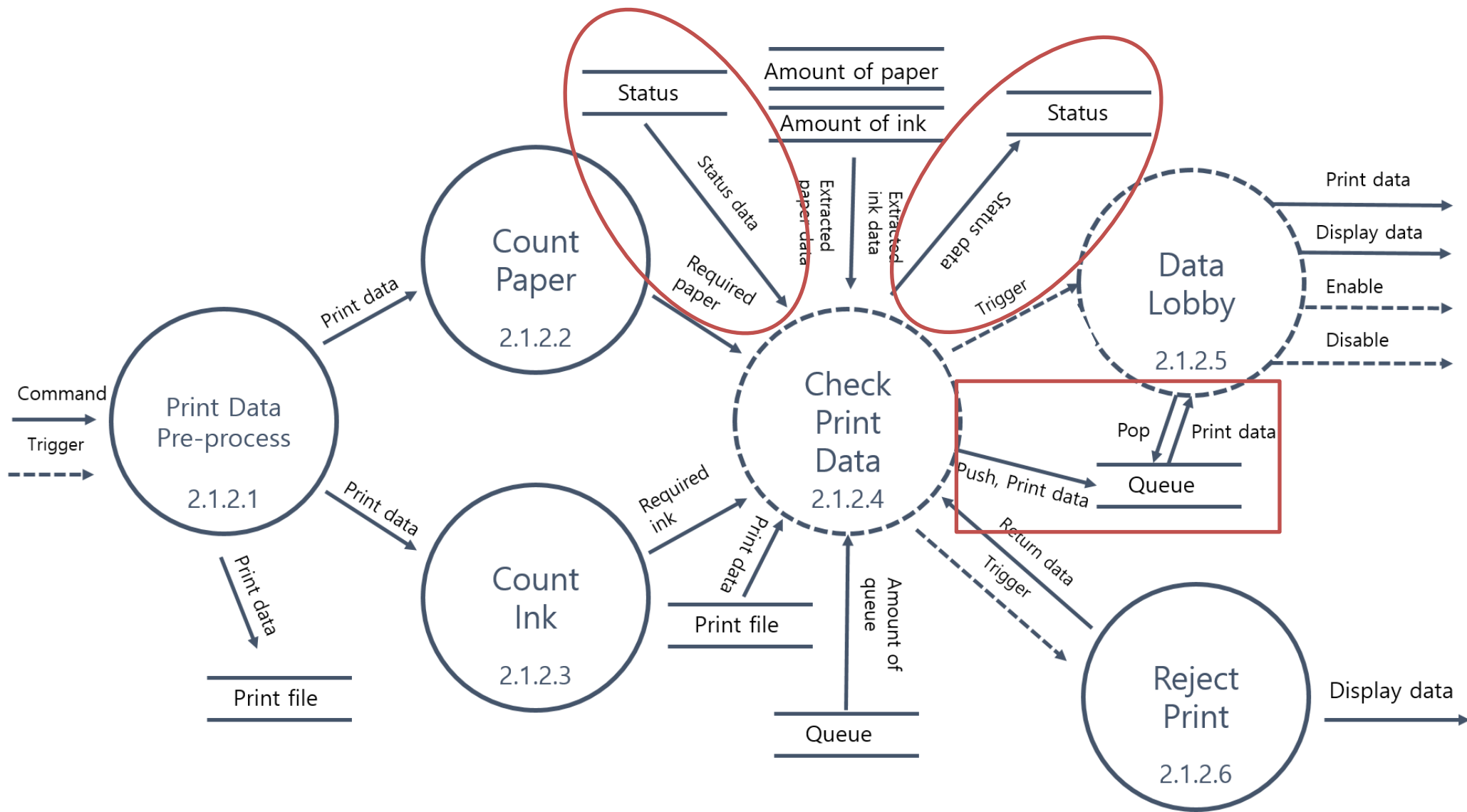
- 01/ EDITED INFORMATION
- 02/ STRUCTURED CHART
 - TRANSFORM ANALYSIS
 - BASIC
 - ADVANCED

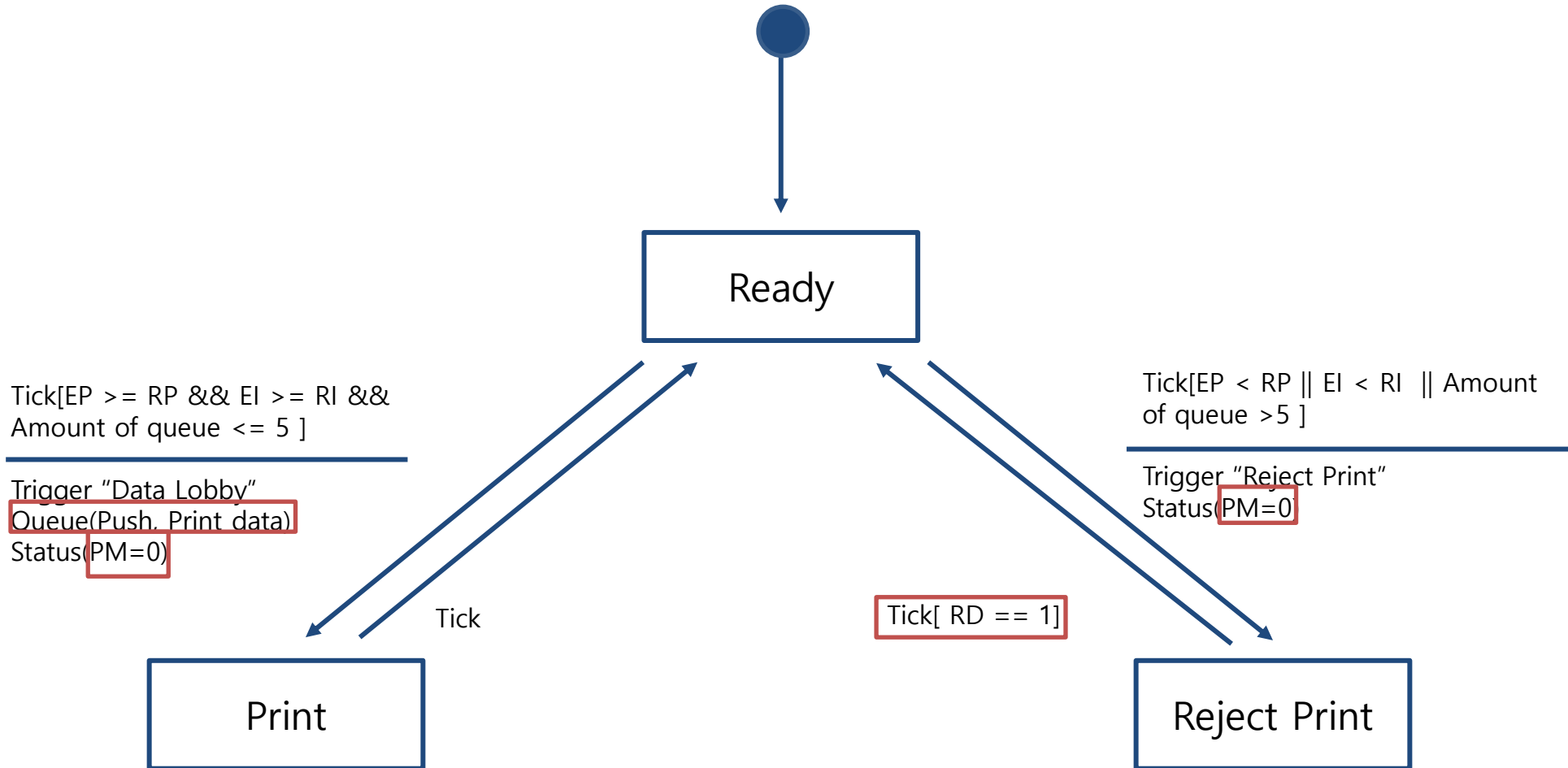




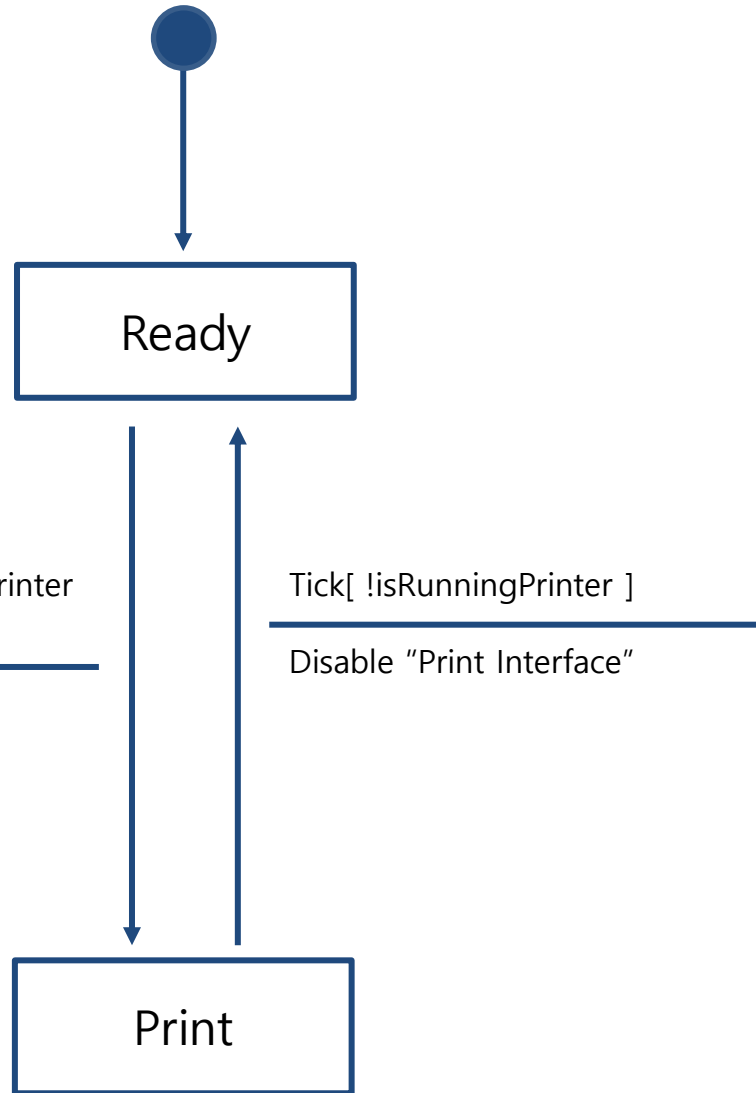
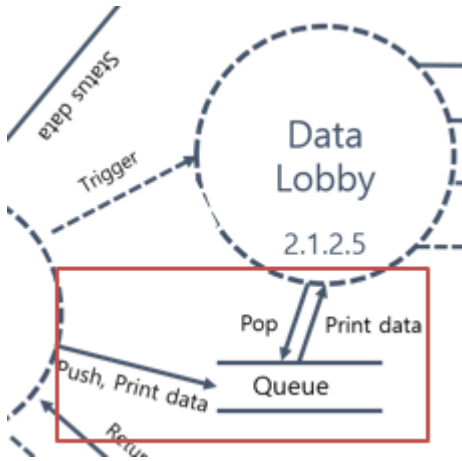
Data Name	Description	Format / Type
Status data	프로세스들의 현재 상태	Structure - Boolean UM - Boolean PM - Boolean RM - Boolean CP - Boolean SUL (UM: User Manager, PM: Printer Manager, RM: Recharge Manager, CP: Cancel Print SUL: Show User List) - Boolean isPrinterRunning - Boolean isCharging







EP = Extracted Paper
 EI = Extracted Ink
 RP = Required Paper
 RI = Required Ink
 RD = Return data

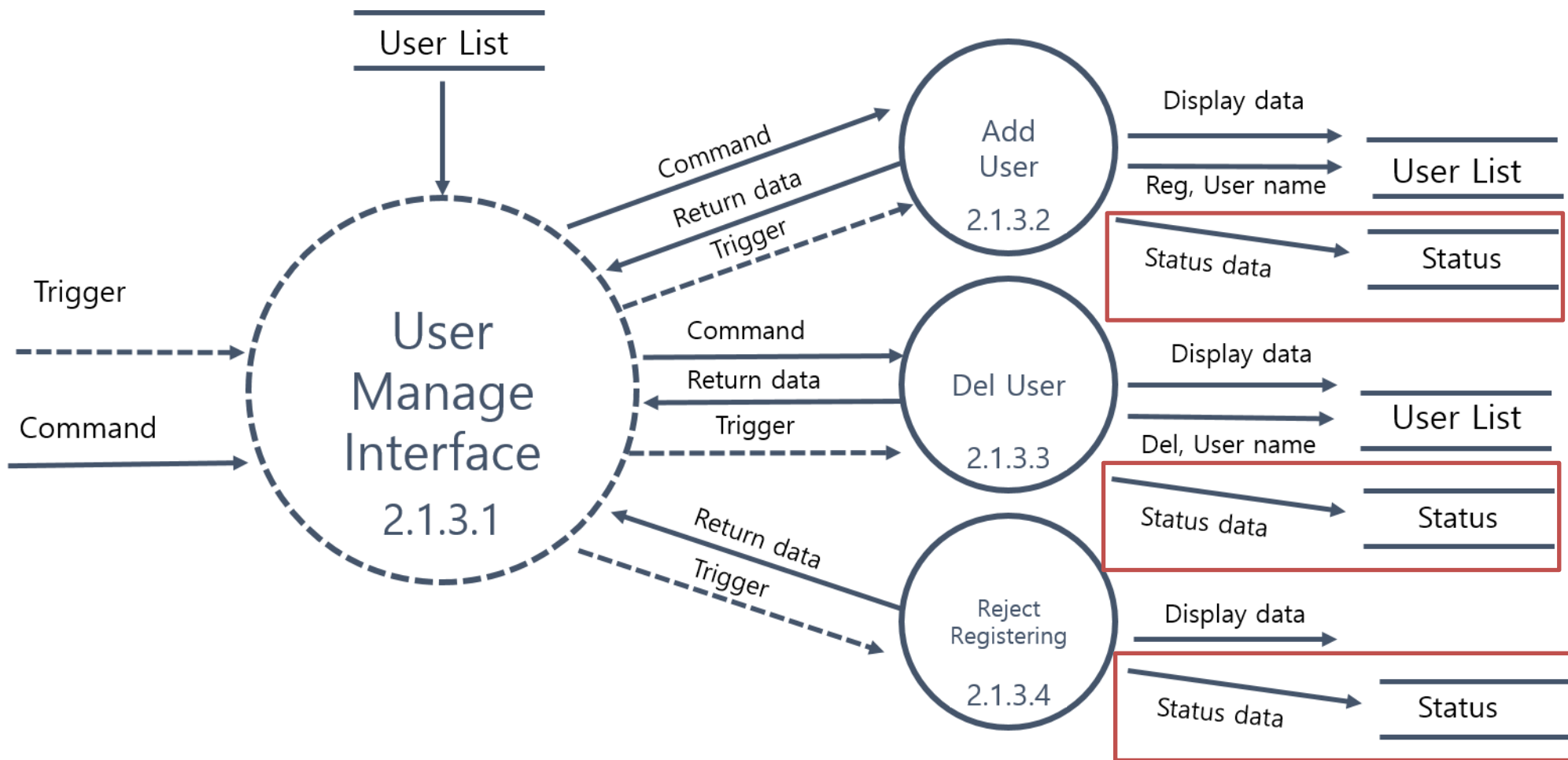


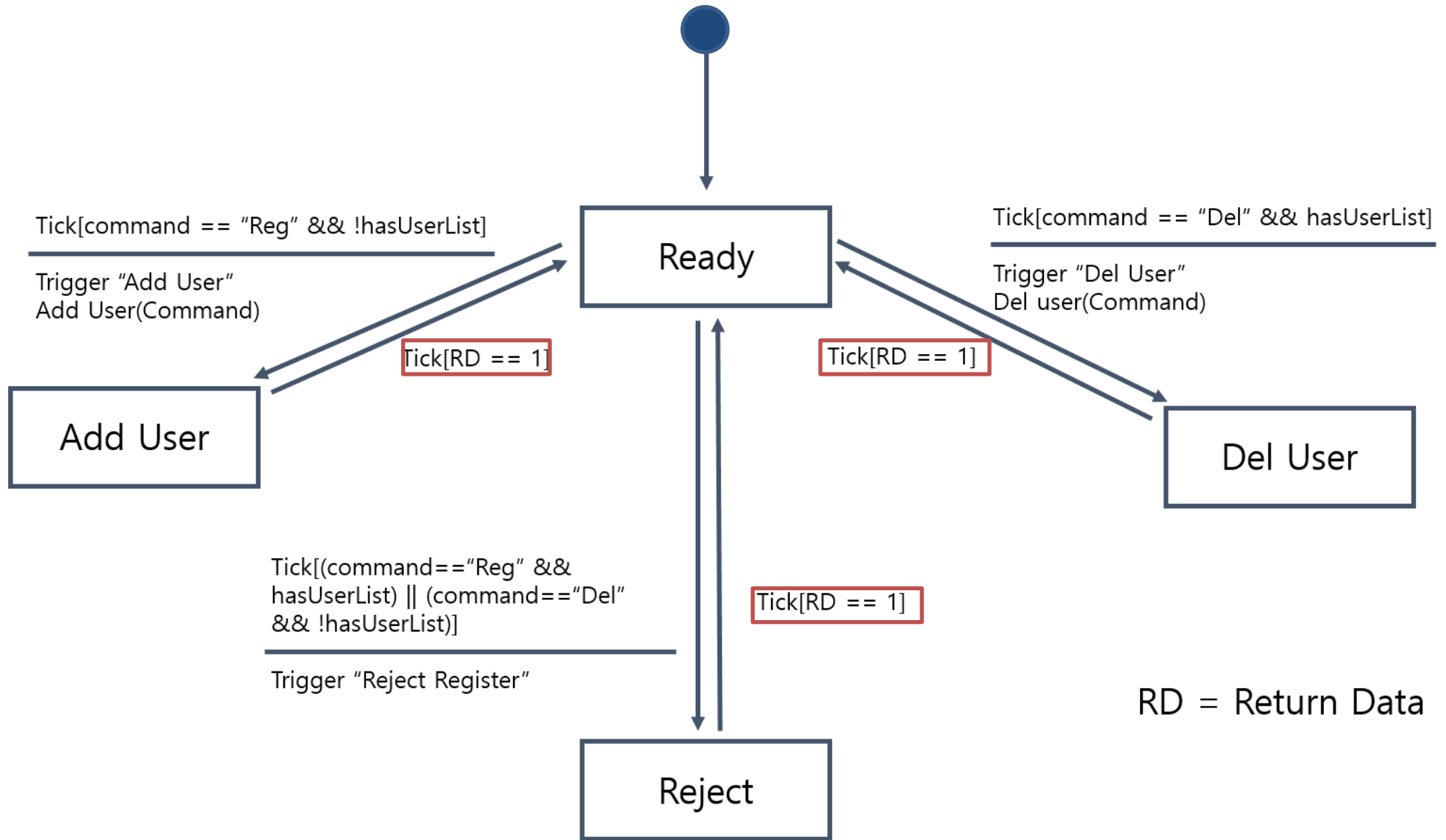
Tick[hasQueue && !isRunningPrinter && !isCharging]

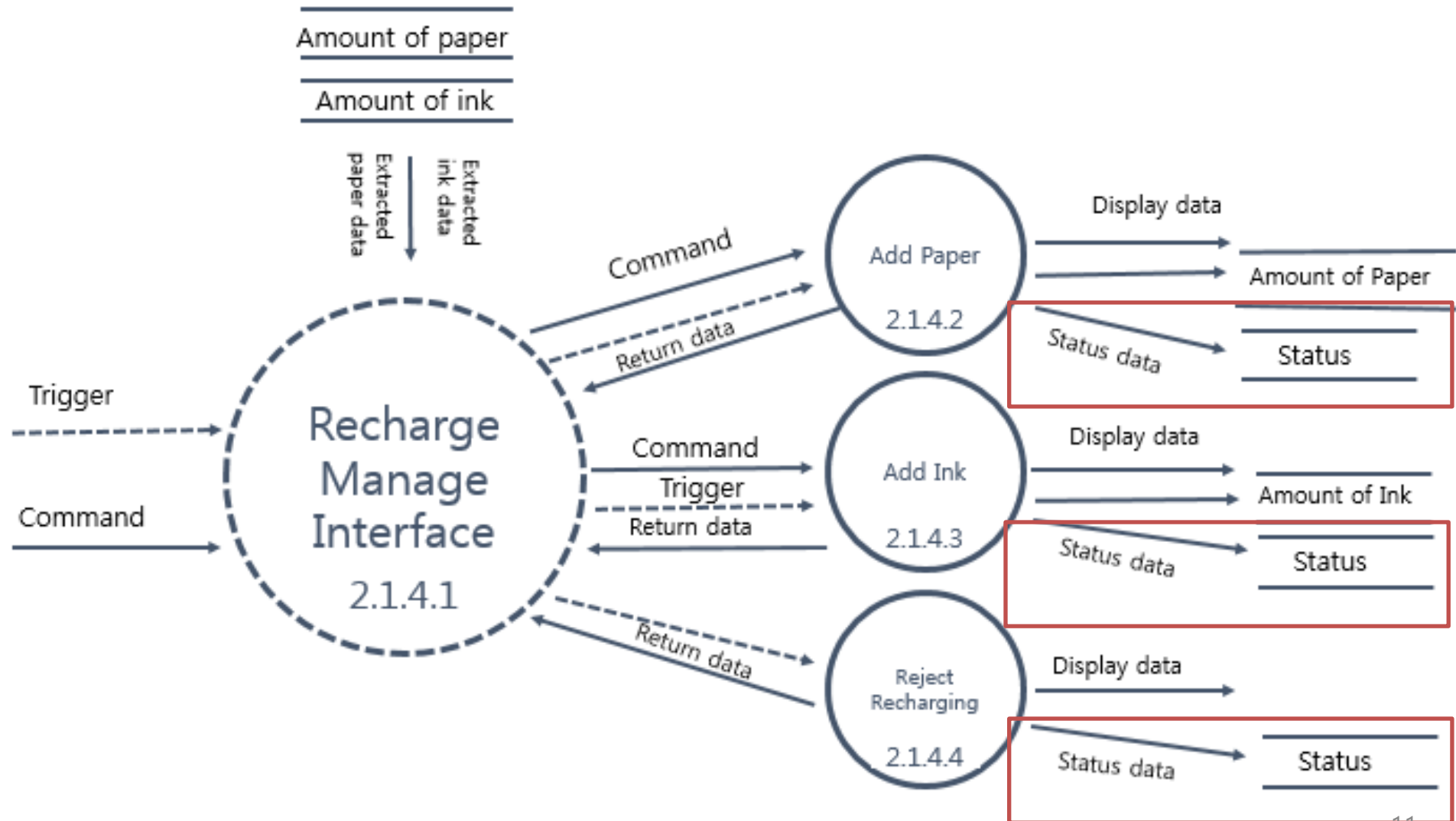
Enable "Print Interface"
Print Interface(Print data)
Display Interface(Display data)
Queue(Pop)

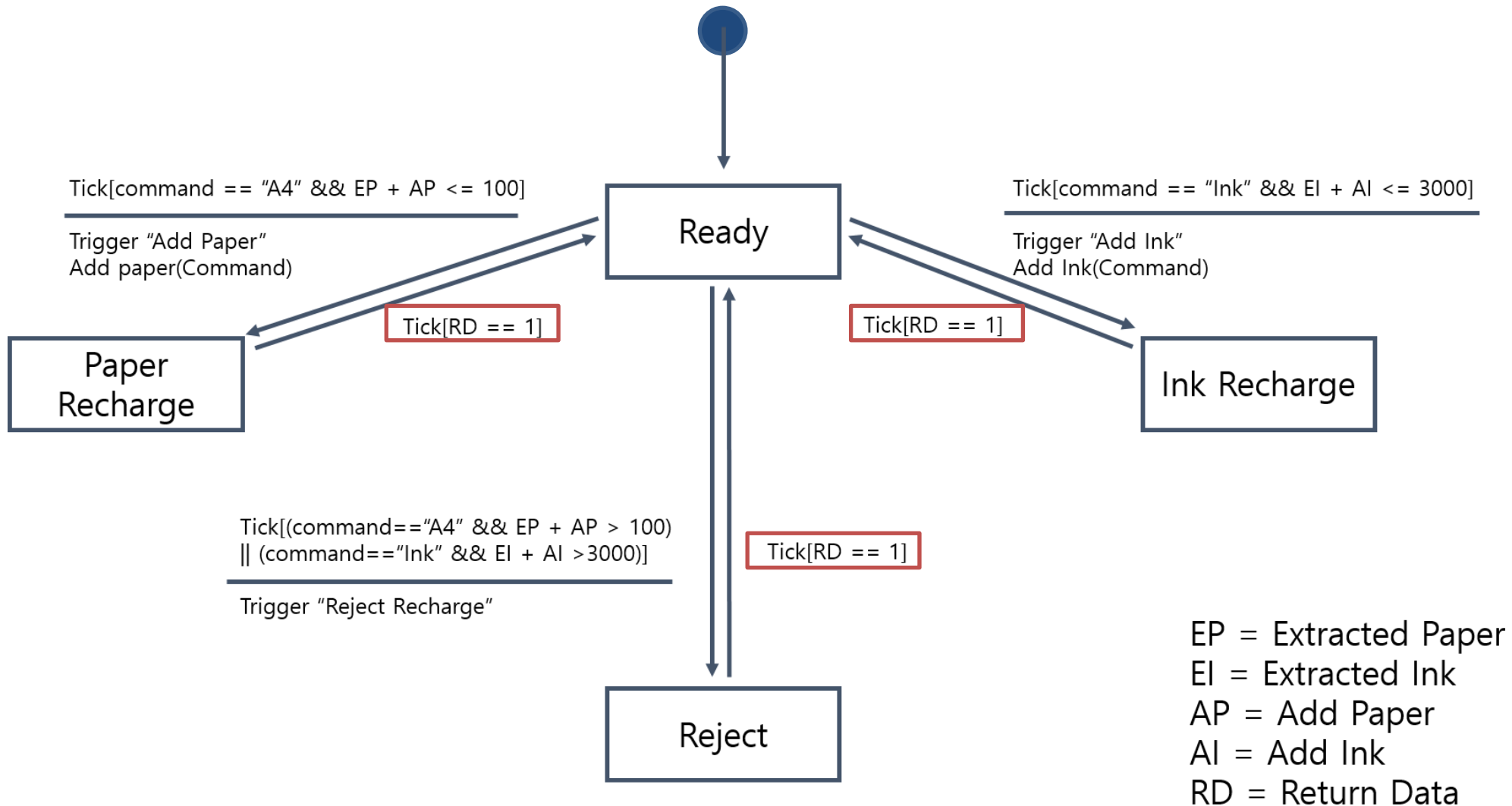
Tick[!isRunningPrinter]

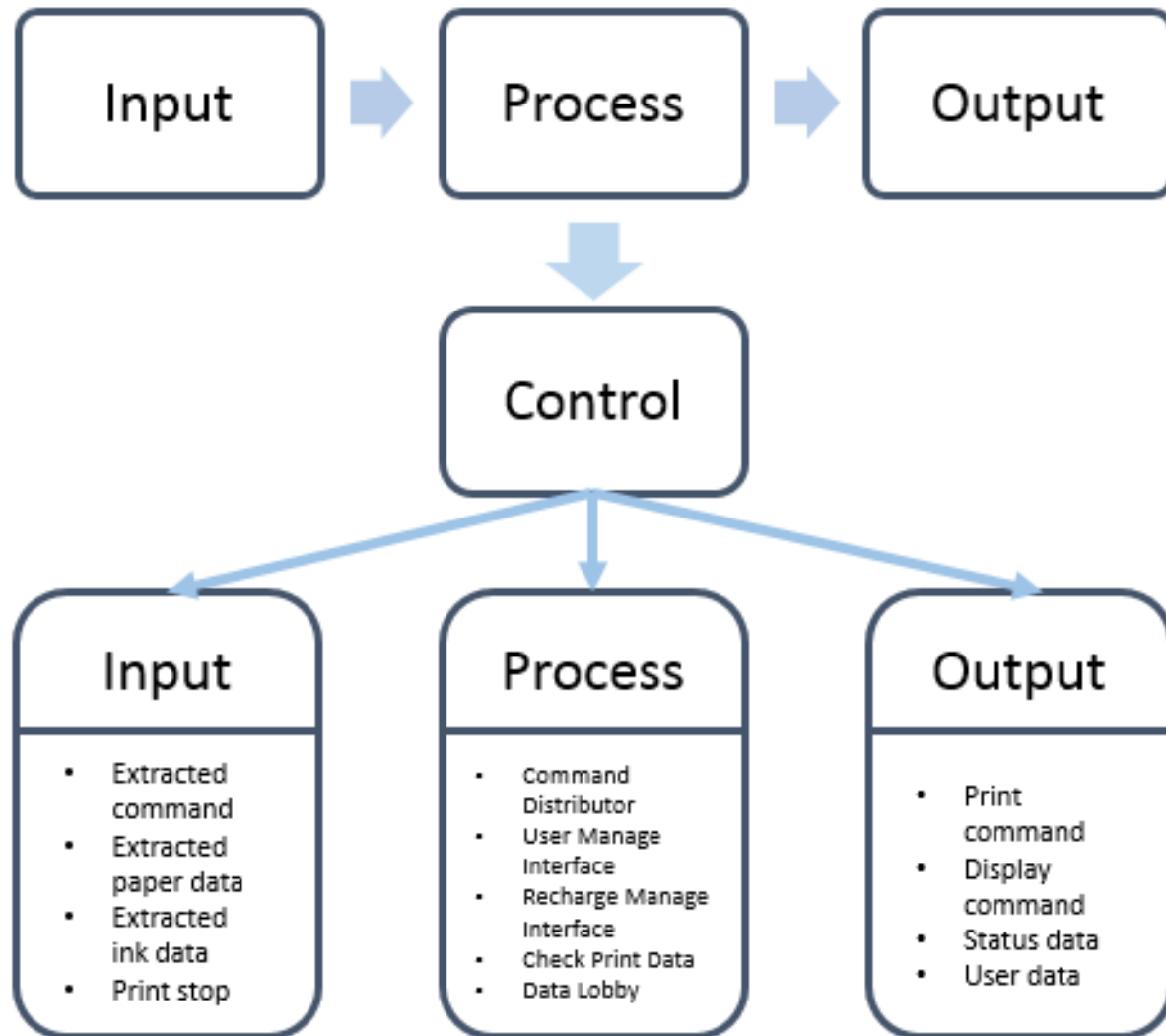
Disable "Print Interface"



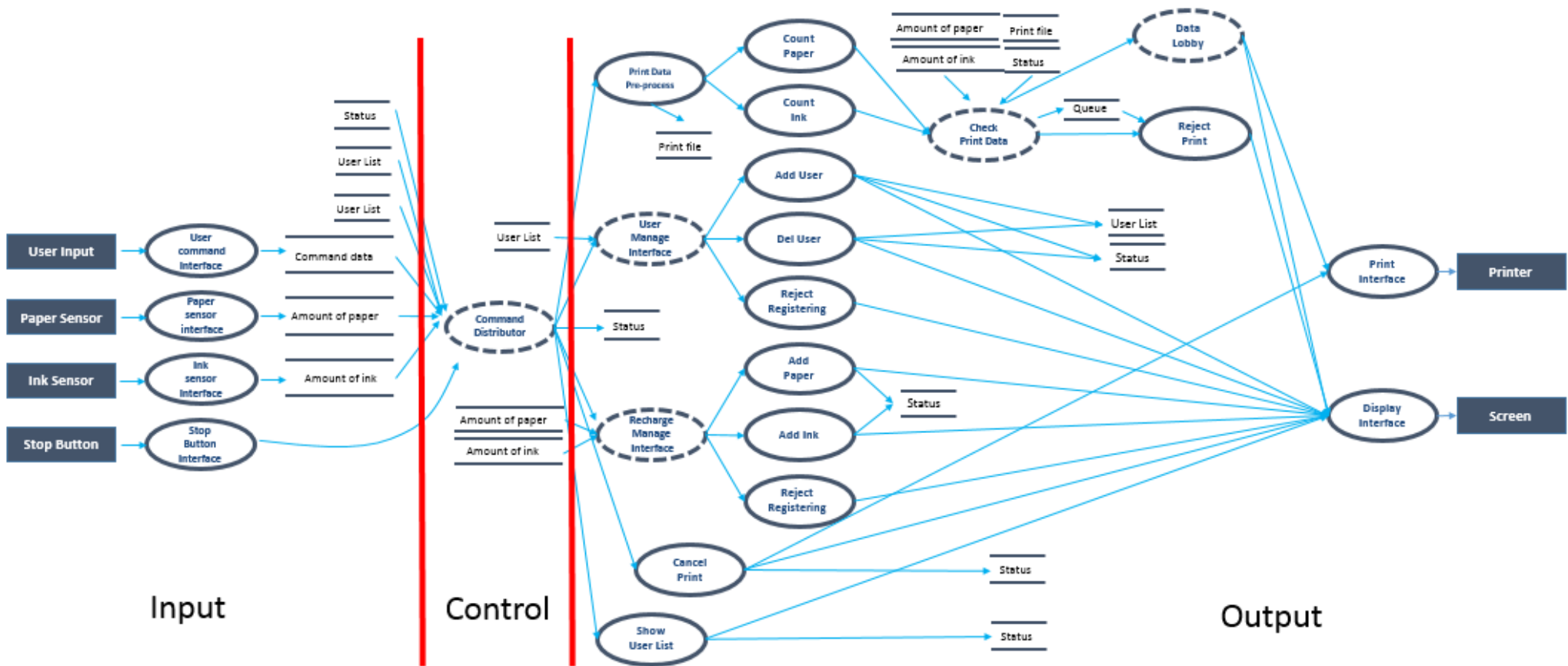




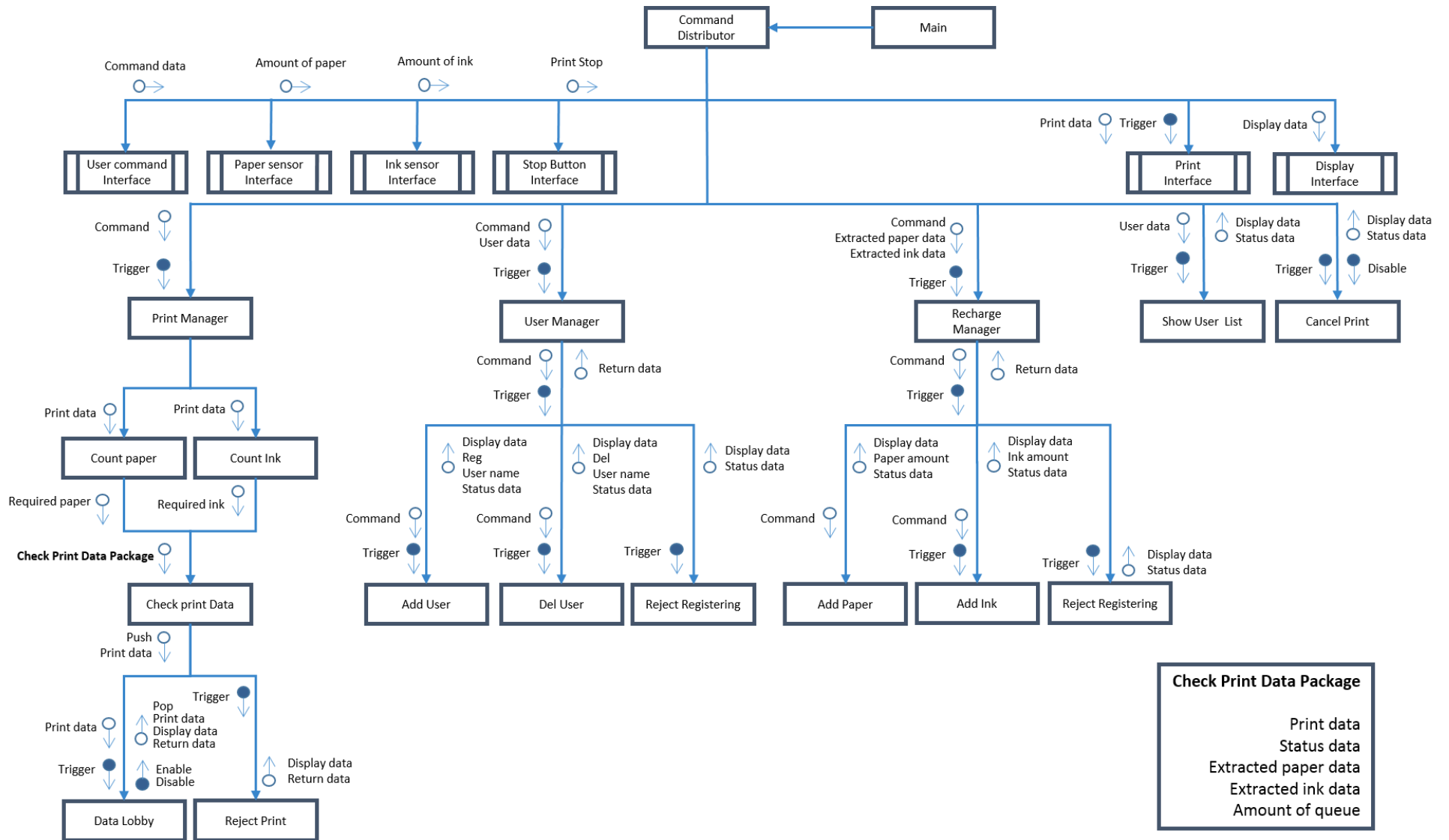




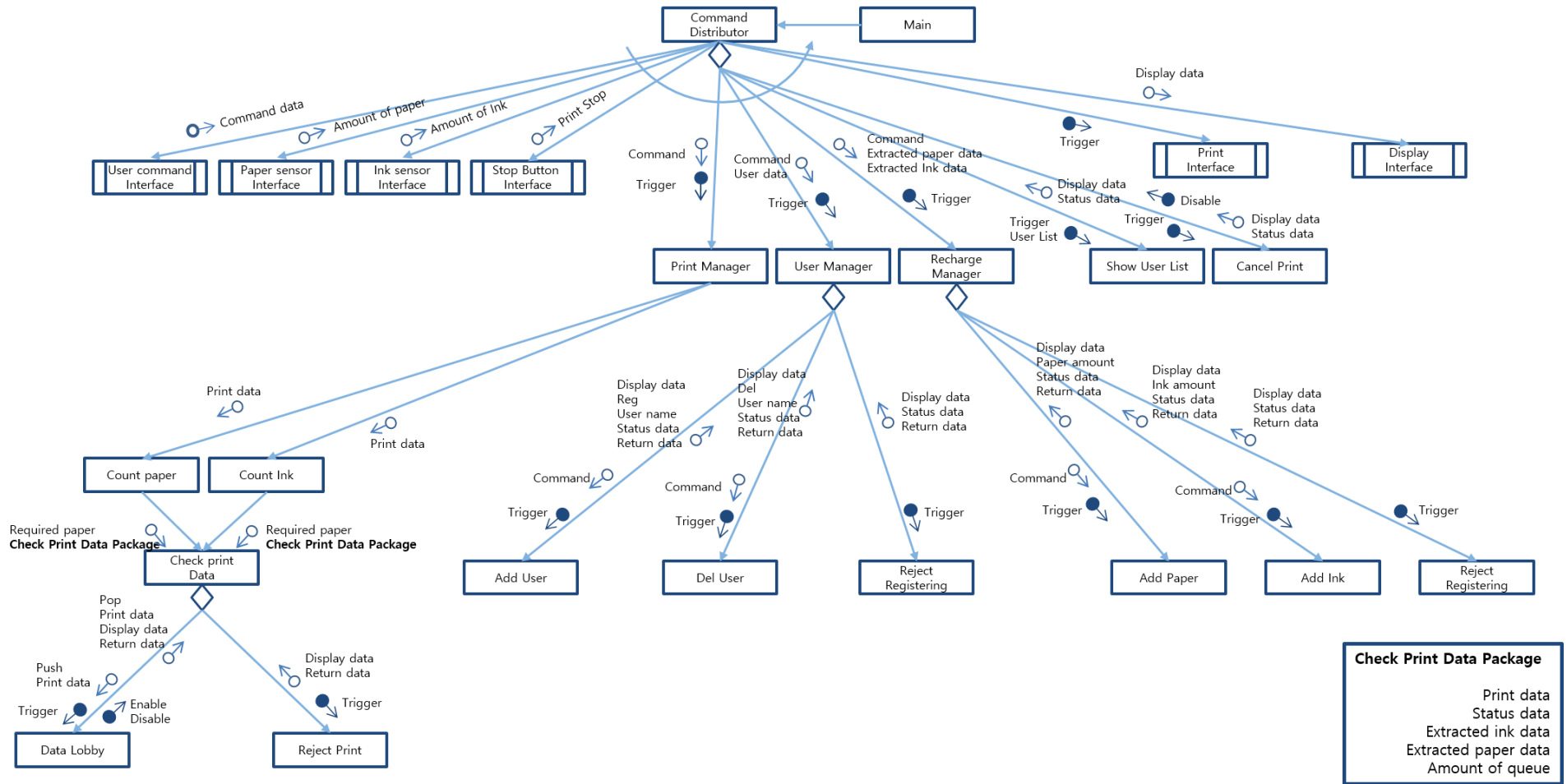
Structured Charts – Transform Analysis



Structured Charts - Basic



Structured Charts - Advanced





Network Printer System Analysis
소프트웨어 공학 개론
Class B - Team 1

Thank you