

JDepend

Software Verification

Team 2

200611490 오 준

201011358 임국현

200913988 주영진

201011318 김슬기

Contents

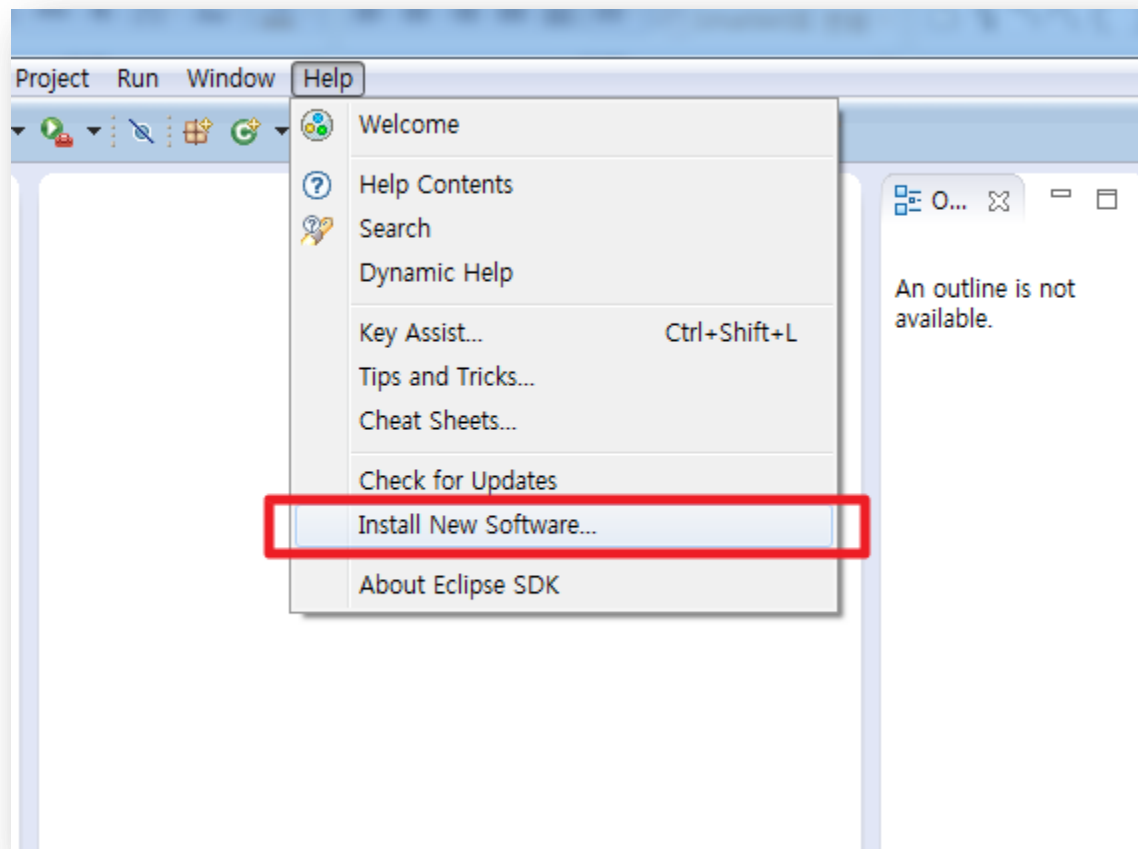
- Jdepend?
- Install JDepend in Eclipse
- About JDepend

Jdepend?

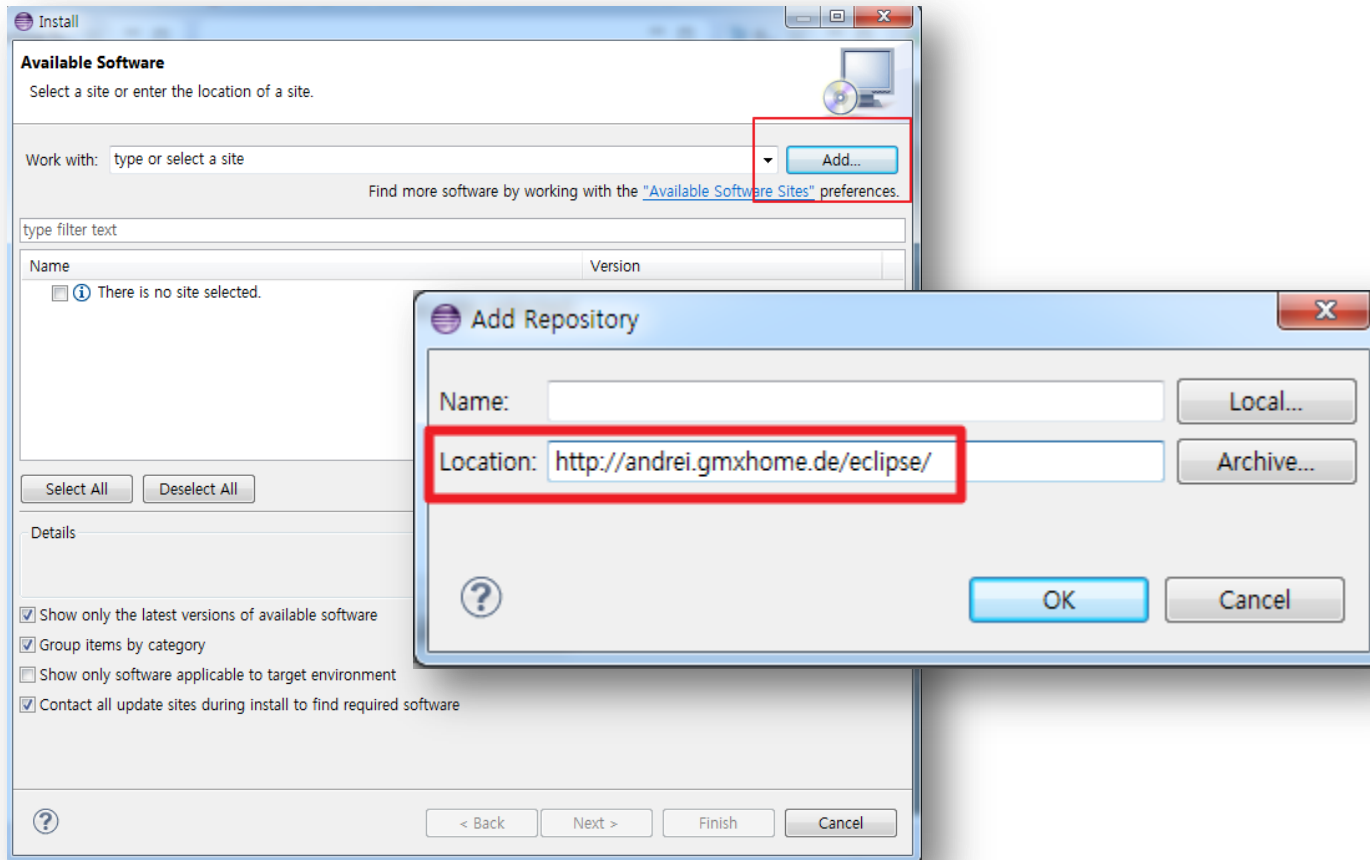
JDepend는 패키지 의존성 측정을 통해 패키지를 효과적으로 분석하고 관리할 수 있도록 지원해 주는 도구입니다.

- 패키지별로 의존성 측정 가능
- 패키지 의존성과 관련된 데이터 품질을 수치화하여 표현
- 수치화된 데이터 품질을 그래프로 표현
- XML 형식 파일로 저장 가능

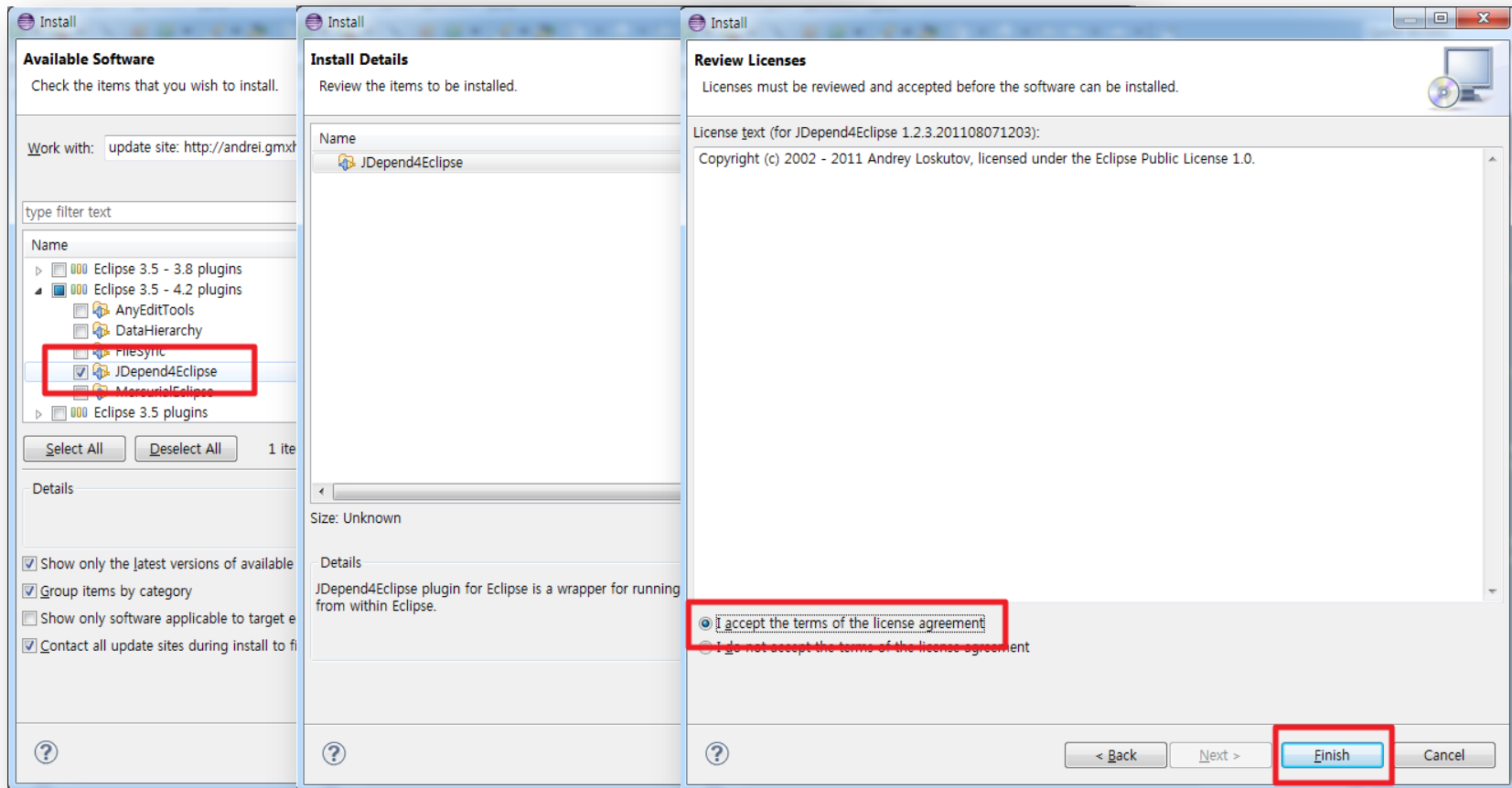
JDepend 설치방법



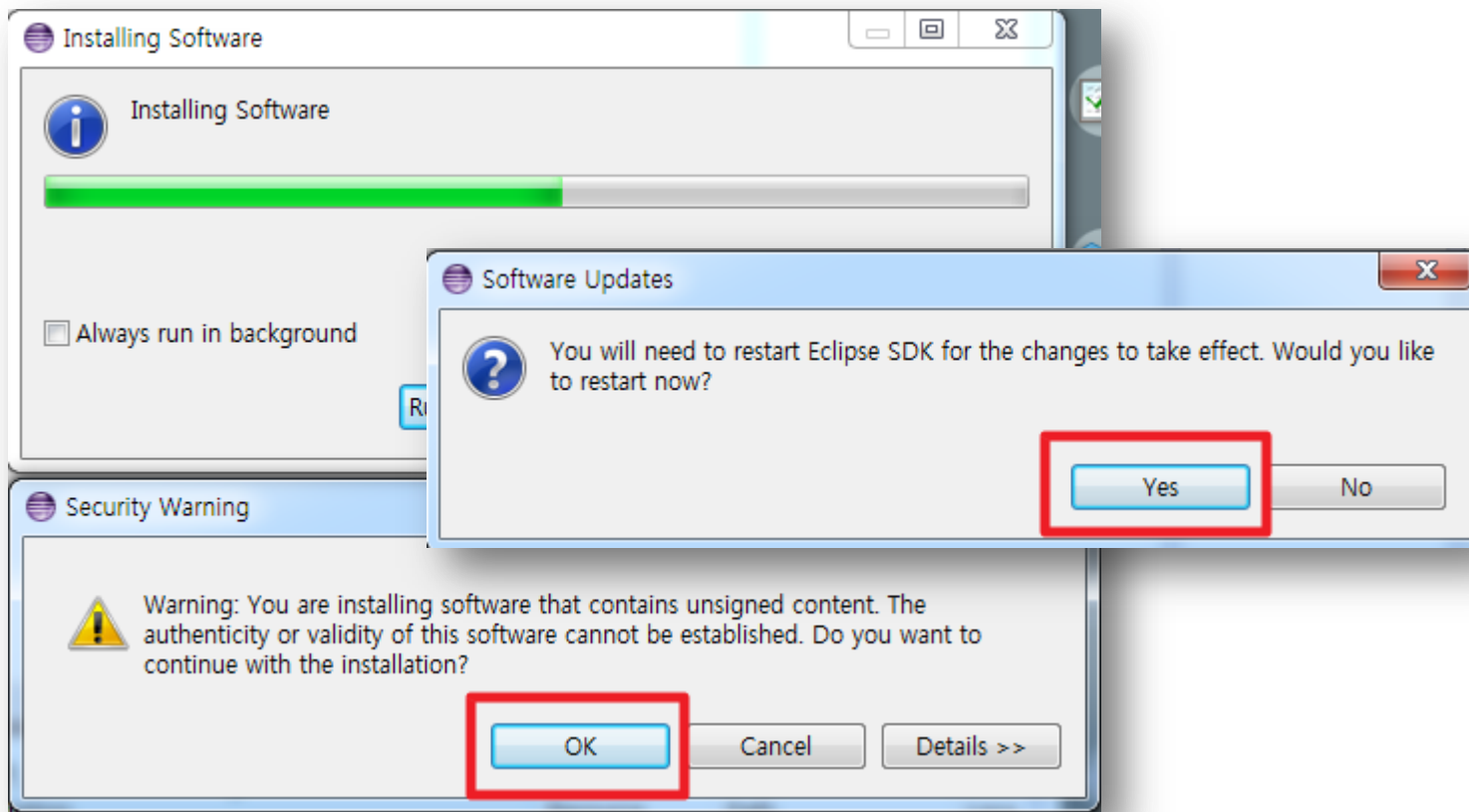
JDepend 설치방법



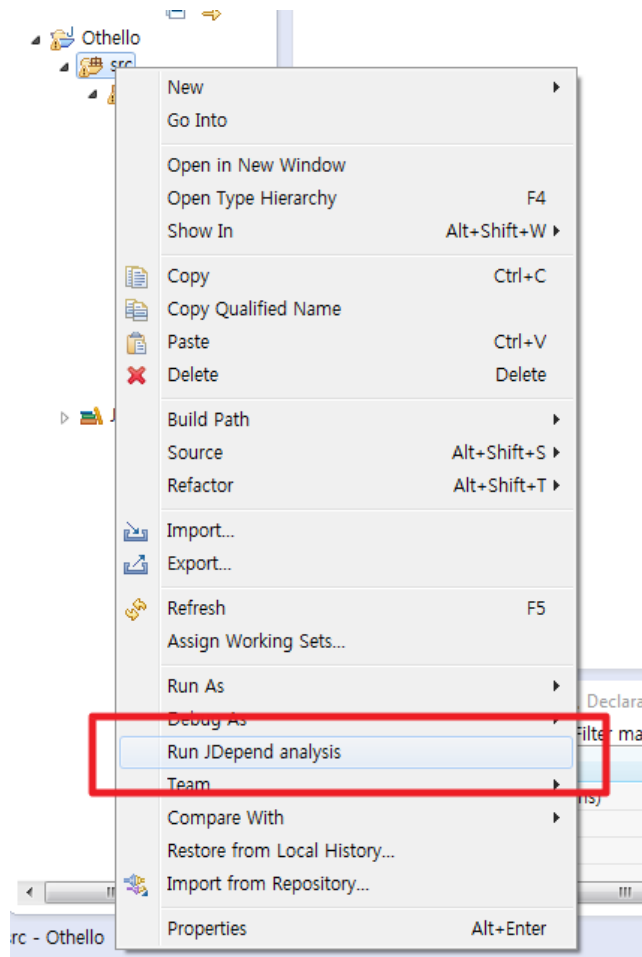
JDepend 설치방법



JDepend 설치방법



About JDepend



About

Packages

- com.sun.j3d.audioengines
- com.sun.j3d.audioengines.javasound
- com.sun.j3d.exp.swing
- com.sun.j3d.exp.swing.impl
- com.sun.j3d.internal
- com.sun.j3d.loaders
- com.sun.j3d.loaders.lw3d
- com.sun.j3d.loaders.objectfile
- com.sun.j3d.utils.applet
- com.sun.j3d.utils.audio
- com.sun.j3d.utils.behaviors.interpolators
- com.sun.j3d.utils.behaviors.keyboard
- com.sun.j3d.utils.behaviors.mouse
- com.sun.j3d.utils.behaviors.picking

Metrics

Dependencies

Selected object(s)

Package	CC(concr.cl.)	AC(abstr.cl.)	Ca(aff.)	Ce(eff.)	A	I	D
Default	0	0	21	0	0.00	0.00	1.00
com.sun.image.codec.jpeg	0	0	1	0	0.00	0.00	1.00
com.sun.j3d.audioengines	3	3	2	1	0.50	0.33	0.16

Packages with cycle

Package	CC(con...	AC(abst...	Ca(aff.)	Ce(eff.)	A	I	D	Cycle!
com.sun.j3d.utils.behaviors.vp	12	2	1	3	0.14	0.75	0.10	⚠
com.sun.j3d.utils.scenegraph.io	8	3	2	2	0.27	0.50	0.22	⚠
com.sun.j3d.utils.scenegraph.io.retained	10	1	7	4	0.09	0.36	0.54	⚠

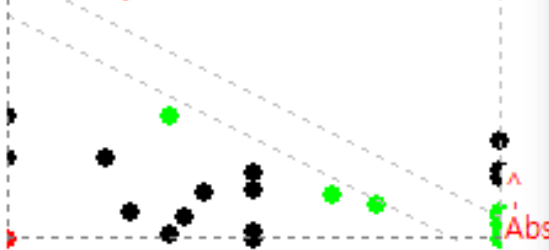
Depends upon - efferent dependencies

Package	CC(con...	AC(abst...	Ca(aff.)	Ce(eff.)	A	I	D	Cycle!
Default	0	0	21	0	0.00	0.00	1.00	
com.sun.image.codec.jpeg	0	0	1	0	0.00	0.00	1.00	
com.sun.j3d.audioengines	3	3	2	1	0.50	0.33	0.16	
com.sun.j3d.exp.swing.impl	0	1	1	0	1.00	0.00	0.00	
com.sun.j3d.internal	8	1	3	1	0.11	0.25	0.63	
com.sun.j3d.loaders	3	3	2	0	0.50	0.00	0.50	
com.sun.j3d.utils.behaviors.interpolators	8	2	1	1	0.20	0.50	0.30	
com.sun.j3d.utils.behaviors.mouse	4	2	4	1	0.33	0.20	0.46	
com.sun.j3d.utils.behaviors.sensor	9	2	1	2	0.18	0.66	0.15	
com.sun.j3d.utils.behaviors.vp	12	2	1	3	0.14	0.75	0.10	⚠
com.sun.j3d.utils.geometry	43	1	4	2	0.02	0.33	0.64	
com.sun.j3d.utils.picking	2	0	1	1	0.00	0.50	0.50	

Used by - afferent dependencies

Package	CC(con...	AC(abst...	Ca(aff.)	Ce(eff.)	A	I	D	Cycle!
com.sun.j3d.audioengines	3	3	2	1	0.50	0.33	0.16	
com.sun.j3d.audioengines.javasound	10	0	0	2	0.00	1.00	0.00	
com.sun.j3d.exp.swing	4	0	0	1	0.00	1.00	0.00	
com.sun.j3d.internal	8	1	3	1	0.11	0.25	0.63	
com.sun.j3d.loaders.lw3d	29	2	0	2	0.06	1.00	0.06	
com.sun.j3d.loaders.objectfile	6	0	0	2	0.00	1.00	0.00	
com.sun.j3d.utils.applet	4	0	0	1	0.00	1.00	0.00	
com.sun.j3d.utils.audio	1	0	0	1	0.00	1.00	0.00	
com.sun.j3d.utils.behaviors.interpolators	8	2	1	1	0.20	0.50	0.30	
com.sun.j3d.utils.behaviors.keyboard	2	0	0	1	0.00	1.00	0.00	
com.sun.j3d.utils.behaviors.mouse	4	2	4	1	0.33	0.20	0.46	
com.sun.j3d.utils.behaviors.picking	5	2	0	2	0.28	1.00	0.28	

Instability ->



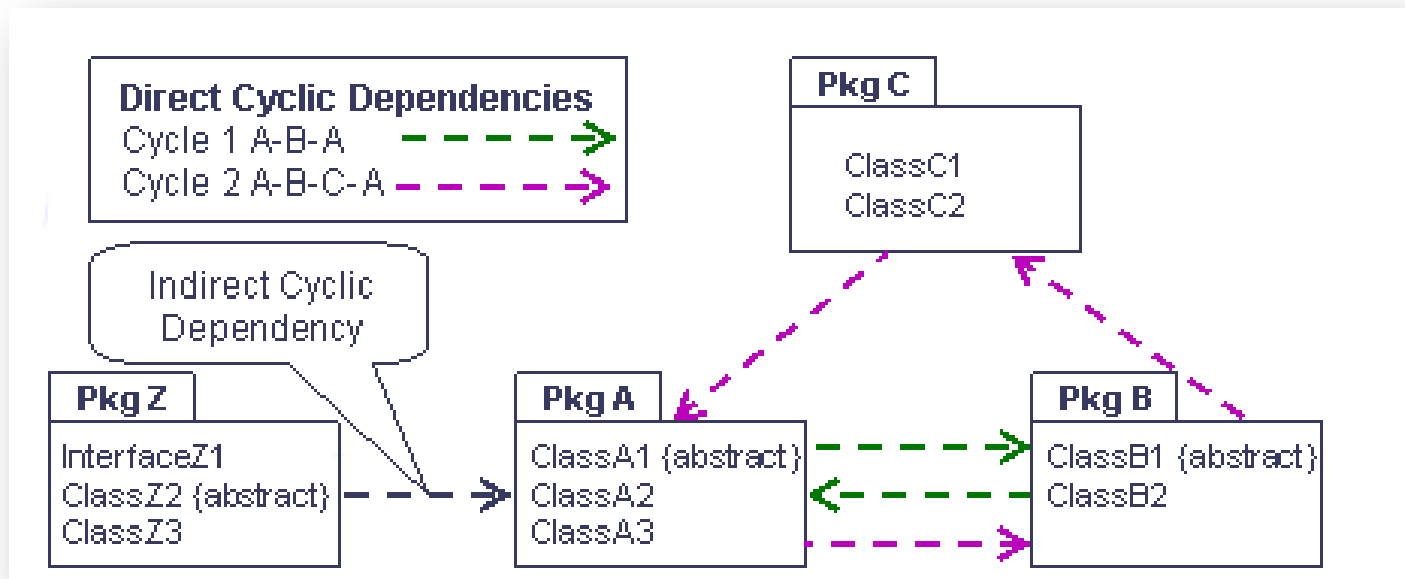
About JDepend

Selected object(s)

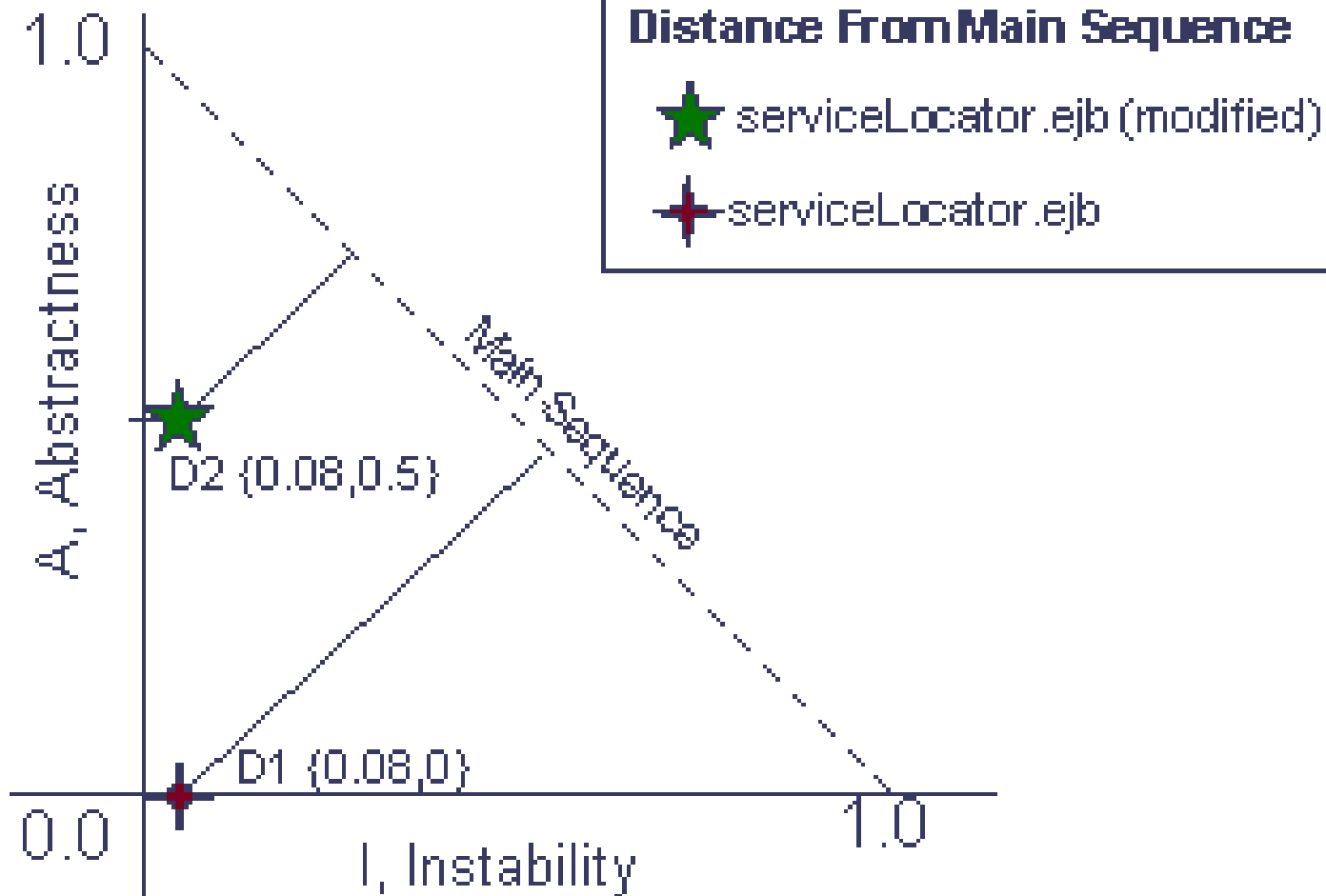
	CC(concr.cl.)	AC(abstr.cl.)	Ca(aff.)	Ce(eff.)	A	I	D	Cycle!
	0	0	21	0	0.00	0.00	1.00	
.image.codec.jpeg	0	0	1	0	0.00	0.00	1.00	
i3d.audioengines	3	3	2	1	0.50	0.33	0.16	

- **CC** - Concrete Class Count
- **AC** - Abstract Class (and Interface) Count
- **Ca** - Afferent Couplings (Ca)
- **Ce** - Efferent Couplings (Ce)
- **A** - Abstractness (0-1)
- **I** - Instability (0-1)
- **D** - Distance from the Main Sequence (0-1)
- **Cyclic** - If the package contains a dependency cycle

About JDepend



About JDepend



Q&A